



# The Preserve at Reedy Creek

## COMMUNITY INFORMATION

The Preserve at Reedy Creek's scenic setting offers a premium location for homebuyers seeking rural serenity and yet easy proximity to one of North Carolina's most vibrant regions. Just 26 miles from downtown Raleigh, the community borders the lush, public Reedy Creek Golf Course. Homesites, some with golf course views, range from an average of three-quarters of an acre to 3 acres. The Preserve at Reedy Creek lies within 4 miles of Interstate 40 and 2.8 miles south of NC Highway 210, close to charming downtown Benson, a historic railroad town at the crossroads of Interstates 40 and 95. Residents enjoy outstanding access to multiple dining, recreational, entertainment and shopping choices, with Carolina Premium Outlets, White Oak Crossing shopping center and McGee's Crossroads nearby.

### COMMUNITY FEATURES

- Mattamy Homes Community
  - Golf Course Views
  - Large Homesites
  - Green Spaces
  - Single Family Homes
  - 3 Car Garages
- Parks
  - Johnston-Strickland Park (6.3 mi)
  - Barbour Grove Park (6.6 mi)
  - Candlestick Park (8.0 mi)
- Grocery Stores/Pharmacies
  - Food Lion (3.9 mi)
  - CVS (4.8 mi)
  - Lowes Food (XX mi)
- Airport
  - RDU (41.0 mi)
- Fire Departments
  - 50-210 Fire Department (4.8 mi)
  - Cleveland Fire Department (7.0 mi)
- Recreation
  - Reedy Creek Golf Course (1.6 mi)
  - Tucker Lake (8.1 mi)
- Shopping
  - Carolina Premium Outlets (14.1 mi)
  - White Oak Crossings (17.4 mi)
  - Crossroads Plaza (27.4 mi)
- Hospitals
  - UNC Johnston (12.8 mi)
  - UNC Urgent Care - Clayton (13.1 mi)
  - Johnston Health - Clayton (13.2 mi)
- Beach - Wilmington (117 mi)
- Mountains - Boone (212 mi)

### UTILITIES?

Internet/Phone/Cable	Charter	855-860-9068
Mail Set-Up	US Post Office	800-275-8777
Electric Company	Duke/Progress Energy	800-777-9898
Garbage Collection	Anchor Disposal	919-585-2035
Water Company	Johnston County Water	919-989-5075

### HOA MANAGEMENT COMPANY

#### Elite Management

Sara Sikora  
Community Manager  
4112 Blue Ridge Rd #100, Raleigh, NC 27612  
Phone: (919) 233-7660  
Email: Sarasikora@elite-mgmt.com  
Website: www.elite-mgmt.com

### HOA ASSOCIATION DUES

\$797/year (\$67.00/month)

### COUNTY TAX RATE

0.8378%

### COMMUNITY SCHOOLS

2024/2025

Four Oaks Elementary  
[www.johnston.k12.nc.us/o/foes](http://www.johnston.k12.nc.us/o/foes)  
919-894-7161

Four Oaks Middle  
[www.johnston.k12.nc.us/o/foms](http://www.johnston.k12.nc.us/o/foms)  
919-894-6003

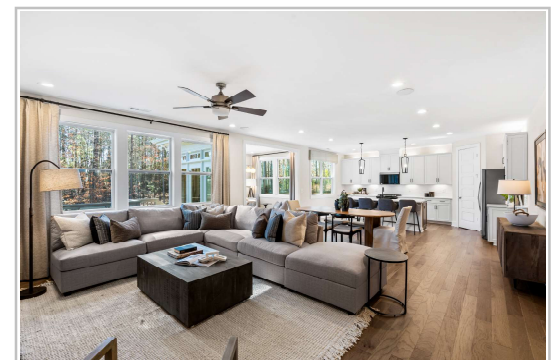
West Johnston High  
[www.johnston.k12.nc.us/wjhs](http://www.johnston.k12.nc.us/wjhs)  
919-934-7333

2025/2026

Benson Elementary  
[www.johnston.k12.nc.us/o/bes](http://www.johnston.k12.nc.us/o/bes)  
919-894-4233

Benson Middle  
[www.johnston.k12.nc.us/o/bms](http://www.johnston.k12.nc.us/o/bms)  
919-894-3889

South Johnston High  
[www.johnston.k12.nc.us/o/sjhs](http://www.johnston.k12.nc.us/o/sjhs)  
919-894-3146



SALES CENTER ADDRESS: 20 Golfview Avenue, Benson, NC 27504

SALES CENTER PHONE NUMBER: (984) 314-8184

DISCOVER THE MATTAMY WAY AT [www.mattamyhomes.com](http://www.mattamyhomes.com)



Visit [MattamyHomes.com](http://MattamyHomes.com) or see a Mattamy New Home Counselor for further details and important legal disclaimers. Existing and proposed amenities for the community are subject to changes, substitutions and/or deletions without notice. Mattamy Homes makes no representation or guarantee that the community or any amenities will be constructed as currently planned. School information is provided by Johnston County; please contact your local school district for the most current information about specific schools. Images of the home are for illustrative purposes only and should never be relied upon. Copyright © 2025 Mattamy Homes. Mattamy Homes, the Mattamy logo are U.S. registered service marks or service marks of Mattamy Homes and/or its subsidiaries. E. & O.E. Builder #49775 Print 03.25.25