



QUICK MOVE-IN HOMES



LOT 3567

THE MAJESTIC
\$630,990



3



2.5



1

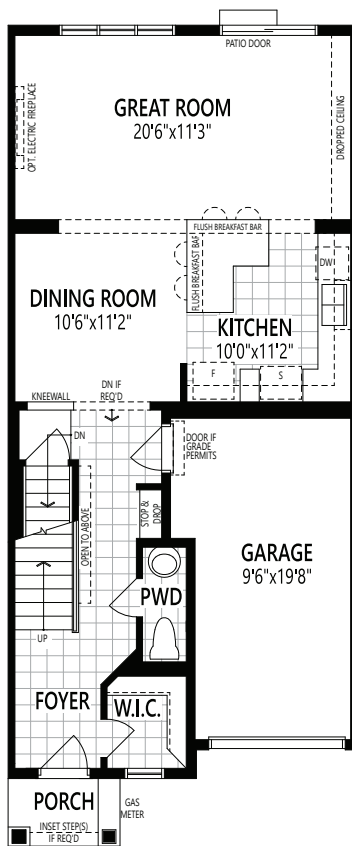


2,141 sq. ft.

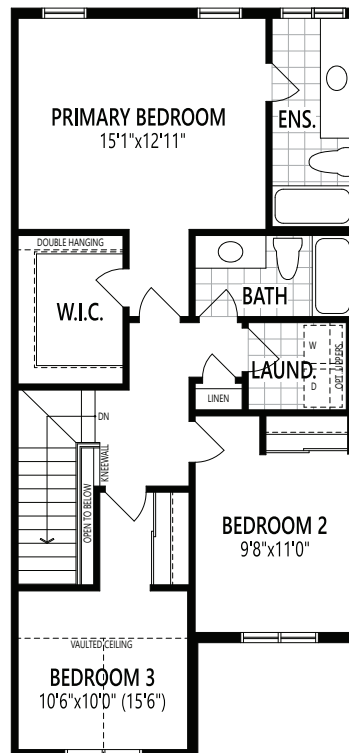
READY FEBRUARY 2023

Upgraded Home Features

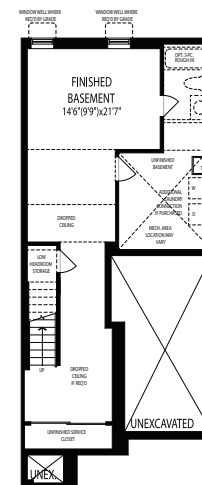
- Finished Basement
- Island with Breakfast Bar
- Granite Countertops Throughout
- Hardwood on Main Floor
- Walk-In Closet in Primary
- Ceramic Tile in Kitchen and Baths



Ground Floor



Second Floor



Basement



QUICK MOVE-IN HOMES



Transitional

LOT 3540

THE LILAC

\$622,990



3



2.5



1

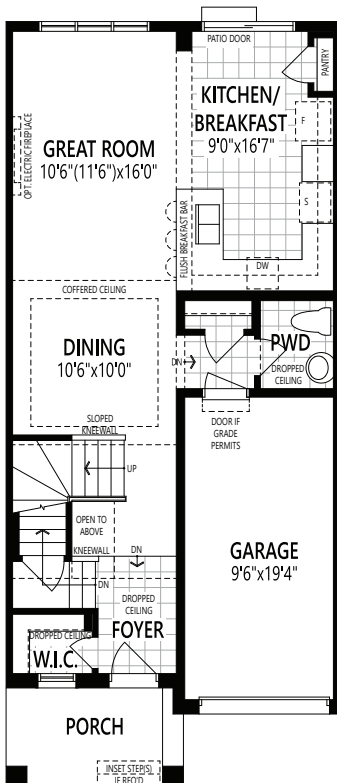


1,874 sq. ft.

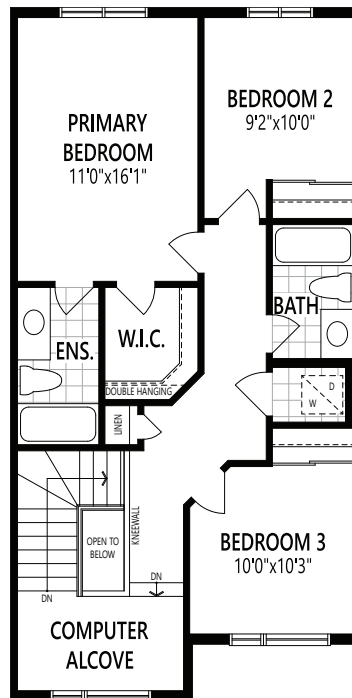
READY FEBRUARY 2023

Upgraded Home Features

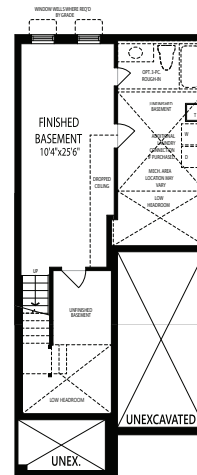
- Finished Basement
- Walk-In Closet in Primary
- Pantry and Flush Breakfast Bar
- Ceramic Tile in Kitchen and Baths
- Granite Countertops Throughout
- Hardwood on Main Floor



Ground Floor



Second Floor



Basement



Transitional

THE LILAC

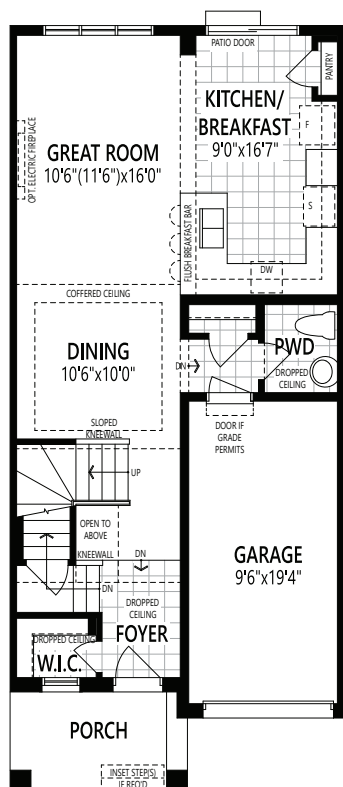
\$622,990



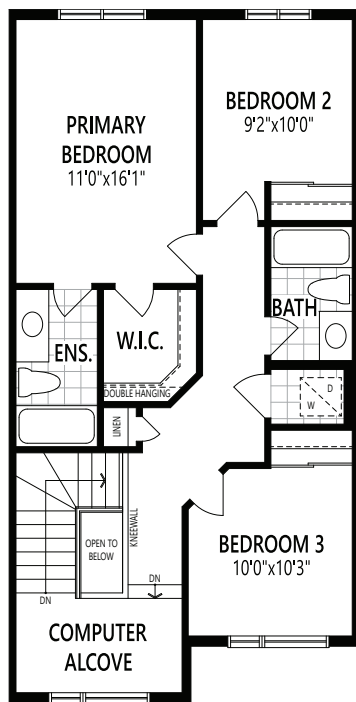
1,874 sq. ft.

Upgraded Home Features

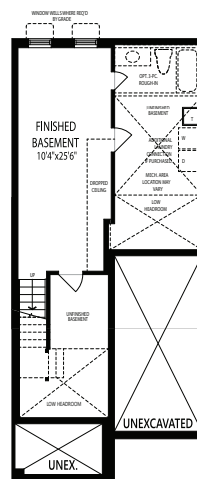
- Finished Basement
- Walk-In Closet in Primary
- Pantry and Flush Breakfast Bar
- Ceramic Tile in Kitchen and Baths
- Granite Countertops Throughout
- Hardwood on Main Floor



Ground Floor



Second Floor



Basement



QUICK MOVE-IN HOMES



LOT 3555

THE MAJESTIC

\$630,990



3



2.5



1

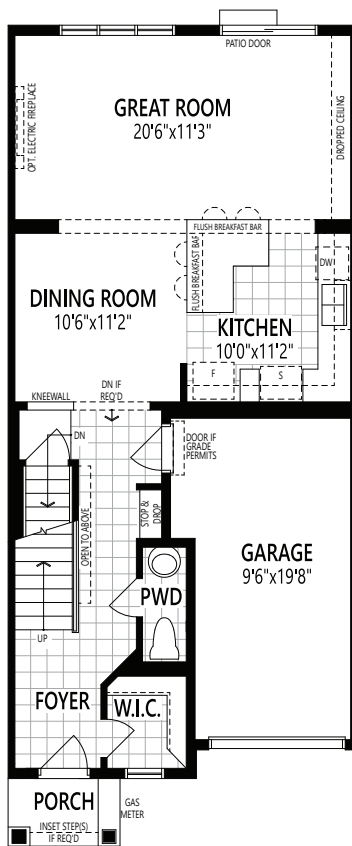


2,141 sq. ft.

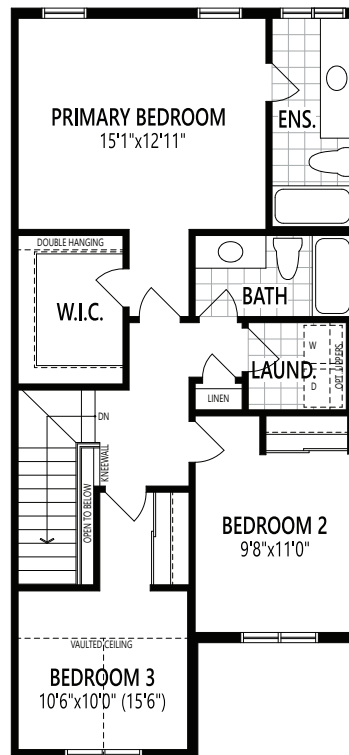
READY FEBRUARY 2023

Upgraded Home Features

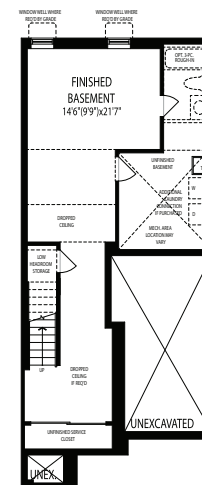
- Finished Basement
- Island with Breakfast Bar
- Granite Countertops Throughout
- Hardwood on Main Floor
- Walk-In Closet in Primary
- Ceramic Tile in Kitchen and Baths



Ground Floor



Second Floor



Basement



QUICK MOVE-IN HOMES



Transitional

LOT 3536

THE MAJESTIC
\$630,990



3



2.5



1

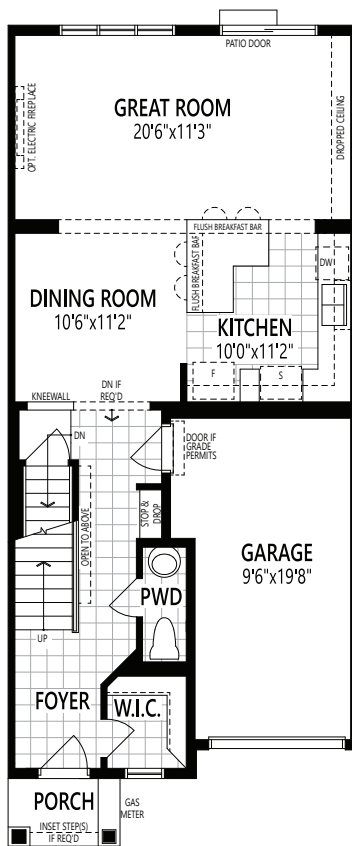


2,141 sq. ft.

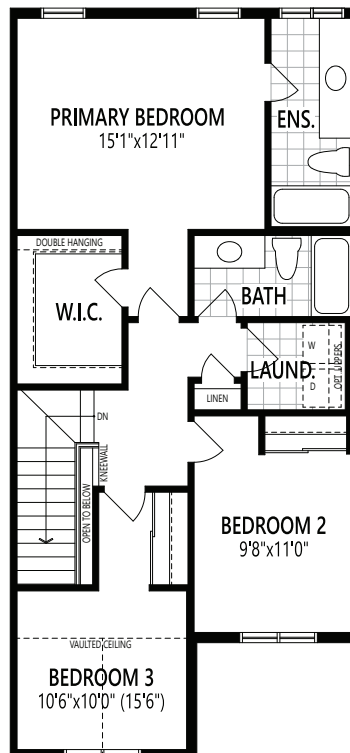
READY MARCH 2023

Upgraded Home Features

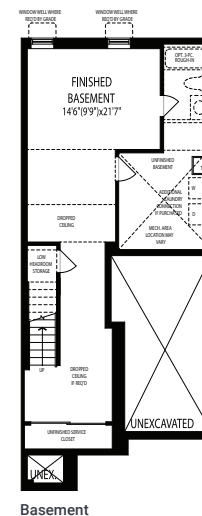
- Finished Basement
- Island with Breakfast Bar
- Granite Countertops Throughout
- Hardwood on Main Floor
- Walk-In Closet in Primary
- Ceramic Tile in Kitchen and Baths



Ground Floor



Second Floor



Basement



QUICK MOVE-IN HOMES



LOT 3550

THE LILAC
\$622,990



3



2.5



1

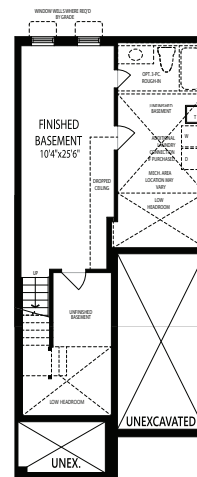
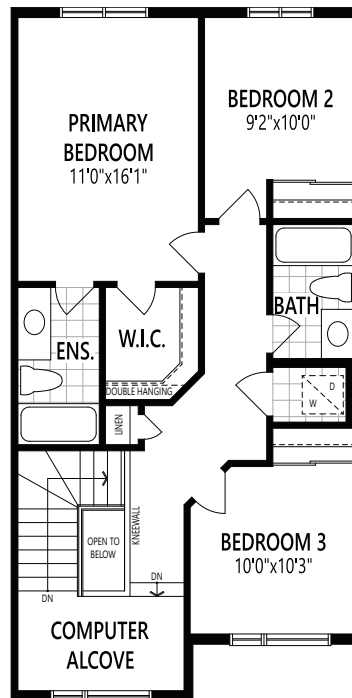
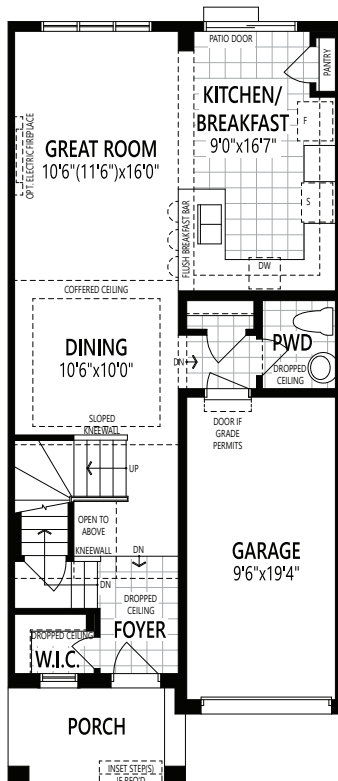


1,874 sq. ft.

READY MARCH 2023

Upgraded Home Features

- Finished Basement
- Walk-In Closet in Primary
- Pantry and Flush Breakfast Bar
- Ceramic Tile in Kitchen and Baths
- Granite Countertops Throughout
- Hardwood on Main Floor





QUICK MOVE-IN HOMES



Transitional

LOT 3548

THE MAJESTIC
\$630,990



3



2.5



1

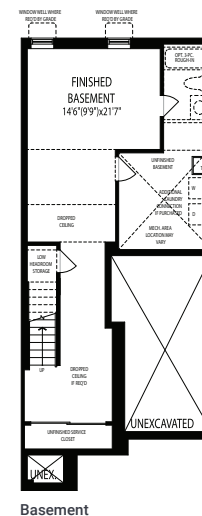
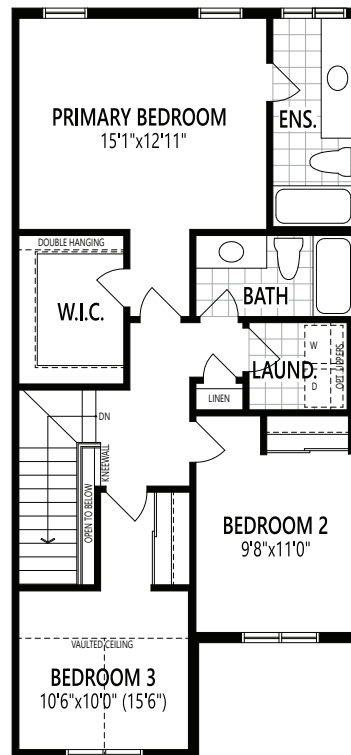
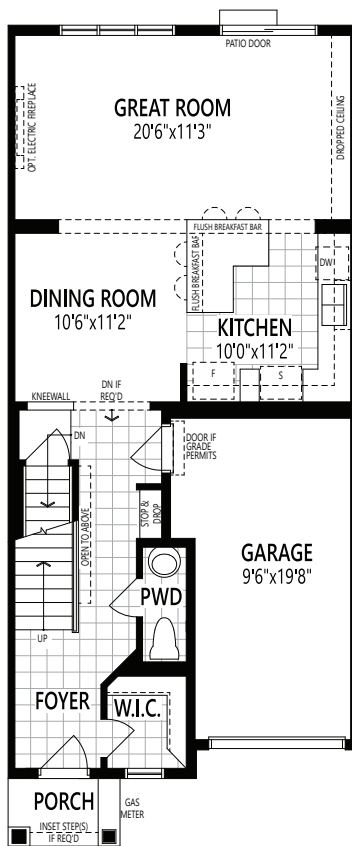


2,141 sq. ft.

READY MARCH 2023

Upgraded Home Features

- Finished Basement
- Island with Breakfast Bar
- Granite Countertops Throughout
- Hardwood on Main Floor
- Walk-In Closet in Primary
- Ceramic Tile in Kitchen and Baths





QUICK MOVE-IN HOMES



Transitional

LOT 3546

THE LILAC
\$622,990



3



2.5



1



1,874 sq. ft.

READY MARCH 2023

Upgraded Home Features

- Finished Basement
- Walk-In Closet in Primary
- Pantry and Flush Breakfast Bar
- Ceramic Tile in Kitchen and Baths
- Granite Countertops Throughout
- Hardwood on Main Floor

